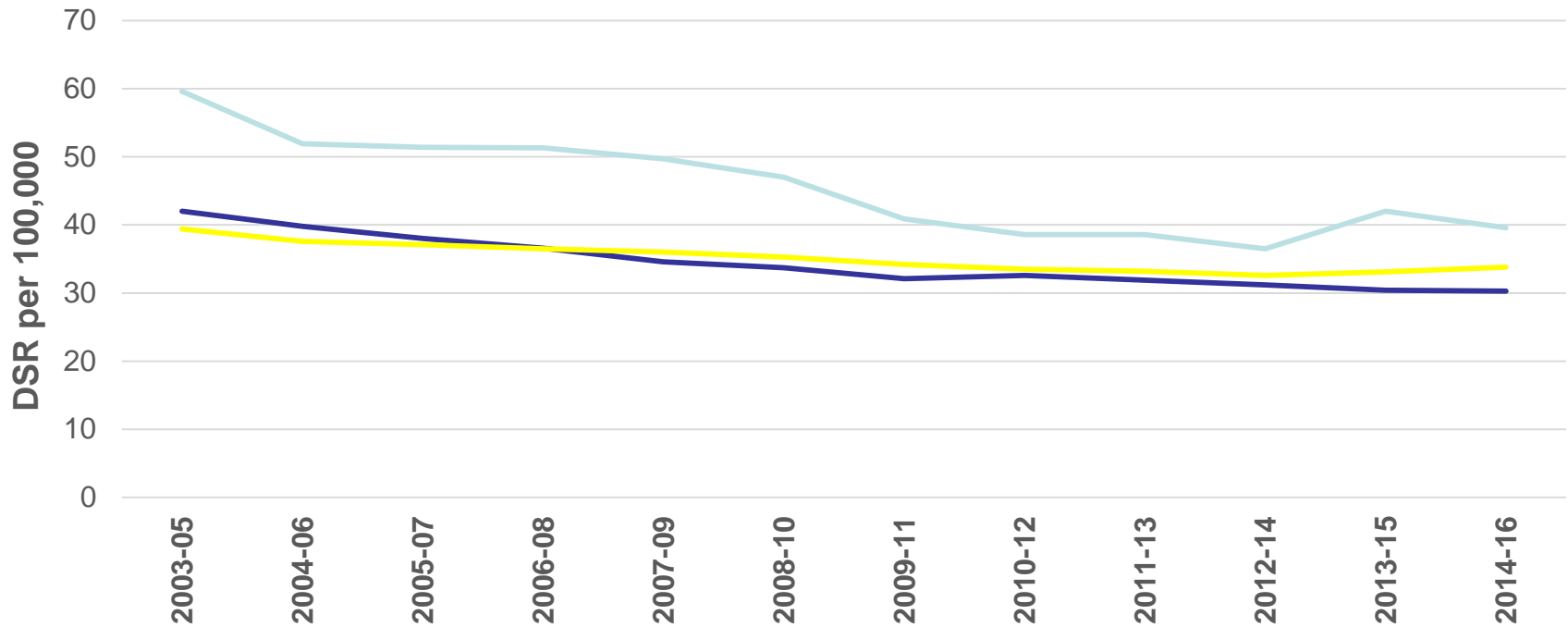


- More people [smoke in Lewisham](#), compared to London and England (ONS, 2016)
- Overall 1 in 5 people smoke, but 1 in 4 who work in [routine & manual occupations](#)
- Smoking attributable [hospital admissions](#) and [mortality](#) are statistically higher than in England and London (HES, 2016/17 & ONS 2014-16)

**Under 75 mortality from respiratory disease**  
**Directly aged-standardised rate per 100,000 population**



Source: ONS

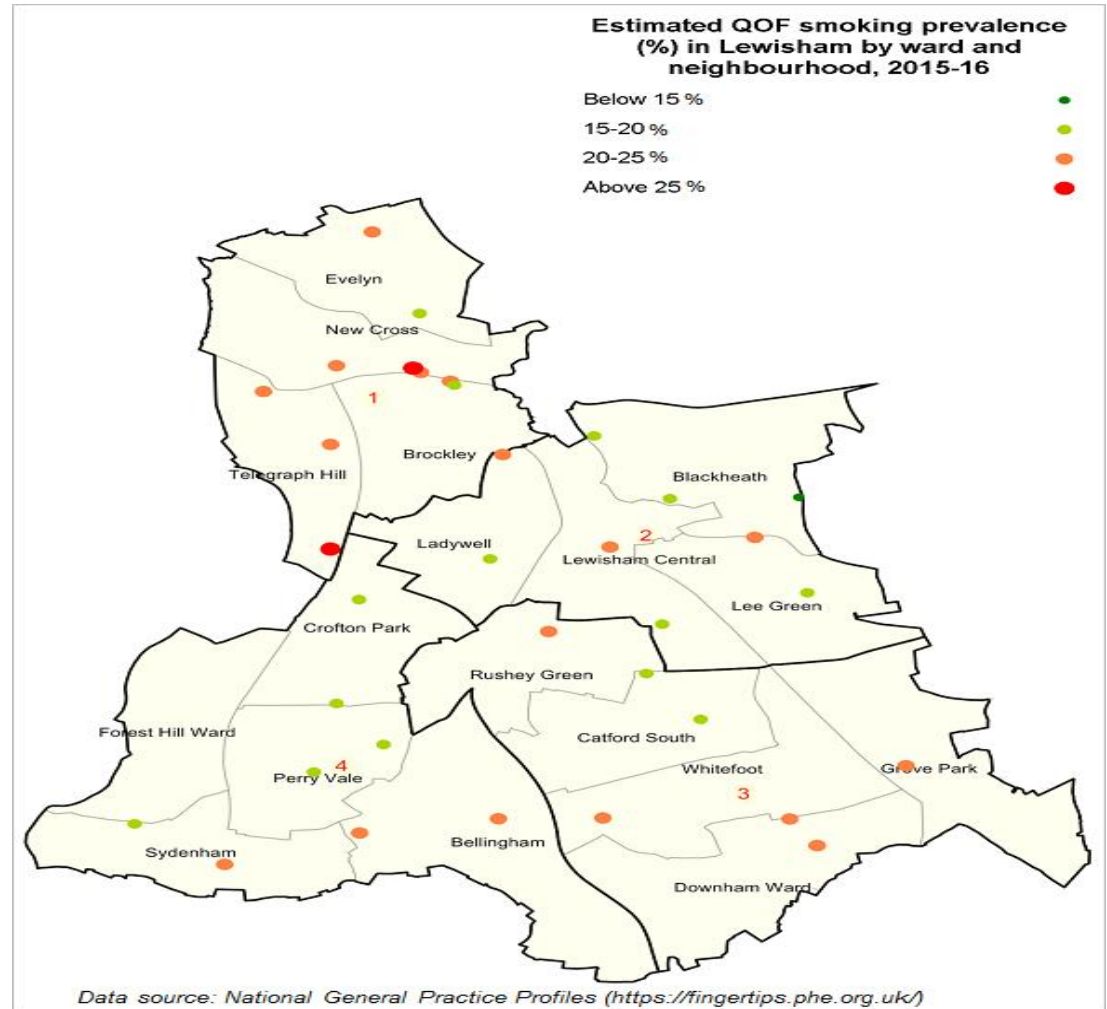
— Lewisham — London — England

**Priority 5 - Preventing the uptake of smoking among children and young people and reducing the numbers of people smoking**



The map plots prevalence of smoking as known to GP Practices.

There appears to be a correlation between more deprived areas of the borough having higher smoking rates.



Smoking Prevalence by GP Practice