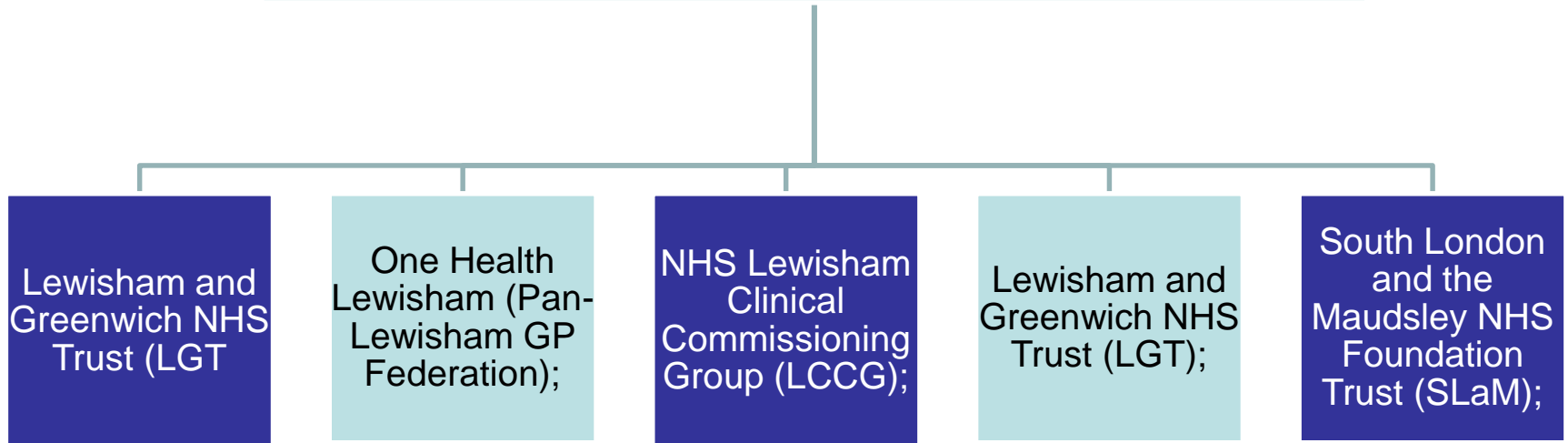


Lewisham Health and Care Partners (LHCP) share a collective vision for a sustainable and accessible health and care system in Lewisham by 2020 that better supports people to maintain and improve their physical and mental wellbeing, to live independently and to have access to high quality care when they need it



Priority 8 - Delaying and reducing the need for long term care and support & Priority 9 - Reducing the number of emergency admissions for people with long-term conditions



